



TEMPLE FORTUNE
ESTATES

Richmond Gardens NW4 4RT
**SEMI-DETACHED HOUSE
ARRANGED AS A 5-BED HMO**

FOR SALE

**PRICE
£700,000**

ABOUT PROPERTY

This semi-detached house is arranged as a five-bedroom HMO, featuring one bathroom and two WCs. The ground floor boasts two reception rooms, currently used as two double bedrooms, with one of them opening to a private garden. Additionally, there is a separate kitchen and a WC. The first floor accommodates two double bedrooms, a single bedroom, a bathroom, and another WC.



PROPERTY FEATURES



HMO FOR 5-BEDROOMS



IDEAL FOR INVESTORS



1 BATHROOM & 2 WCs



DRIVEWAY FOR 2-3 CARS



GAS CENTRAL HEATING



GET IN TOUCH

020 8952 0908
079 5629 1499

admin@templefe.co.uk
www.templefe.co.uk

1 Hallswelle Parade, Finchley
Road, London, NW11 0DL



TEMPLE FORTUNE
ESTATES

MORE ABOUT THE PROPERTY

The property includes a driveway to fit 2 to 3 cars and is offered for sale chain-free, with an HMO license permitting up to five bedrooms, making it an attractive option for investors and developers with a return of **£4,000 per month**.

Conveniently situated for easy access to Brent Cross Shopping Centre and the transport links in Hendon and the surrounding area.

- Council Tax Band E
- EPC Certificate E

NEARBY TRANSPORT LINKS:



Hendon Central Underground Station / Northern Line: **0.5 miles**



Hendon Train Station / Thameslink Railway: **0.7 miles**



GET IN TOUCH

020 8952 0908
079 5629 1499

admin@templefe.co.uk
www.templefe.co.uk

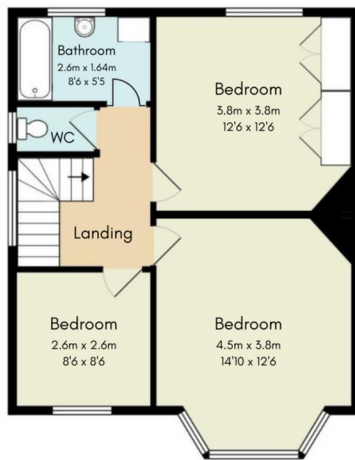
1 Hallswelle Parade, Finchley
Road, London, NW11 0DL



TEMPLE FORTUNE ESTATES

Richmond Gardens NW4

Total Area: 105.6 sq m / 1136 sq ft



First Floor

Area: 51.4 sq m / 553 sq ft



Ground Floor

Area: 54.2 sq m / 583 sq ft



GET IN TOUCH

020 8952 0908
079 8336 4090

admin@templefe.co.uk
www.templefe.co.uk

1 Hallswelle Parade, Finchley
Road, London, NW11 0DL